



ACUO
we care about the water you drink

SERENITY COMPUTERIZED WATER DISPENSER

00-8103 Series

LED Touch Screen Cold, Hot,
Warm Water At Your Disposal!

Awarded the Taiwan Excellence Awards



PRODUCT FEATURES

Sleek & Elegant Compact Size With Big Water Volumes
Perfect for both business or residential needs.



CLEAN & EFFICIENT

- All water temperatures have been boiled and filtered before use.
- Allows users to pre-set time and period of complete sterilization (1-7 times per week, on different hours each day) with boiling water and flushing of all pipes. System automatically activates Sterilization according to its settings.
- Multi-guard® filter targets microorganisms effectively and ensures bacteria count will fall within national drinking water standards.



SUPERIOR HEAT EXCHANGE SYSTEM

- Large quantities of warm water supply at low energy costs using patented water-to-water heat exchange system (patent number 563847).
- Lowers hot water temperature to warm water temperature, and simultaneously uses this energy exchange to heat up hot water efficiently.



UNIQUE CHILLING TECHNOLOGY

- Cold tank's unique internal piping absorbs heat and lowers water temperature efficiently.



MULTIPLE WATER TEMPERATURE PRESERVATION

- Hot Water : can be set at any temperature between 50°C to 98°C, or turned off.
- Cold Water : can be set at any temperature between 10°C to 30°C, or turned off.
- Cold and warm water alert: can be set to stop outlet when cold and warm water temperature exceeds 40°C to 60°C, or turned off.



ECO-FRIENDLY

- Allow users to pre-set period of "Sleep Mode" to conserve energy when water dispenser is not in use. System automatically activates Sleep Mode and resumes to normal operations according to its settings.
- 15 minutes dormant mode: system goes dormant after 15 minutes of no usage, automatically activates when used.
- Eco-smart temperature heating adjusts the dispenser's water temperatures relative to external temperatures to conserve energy.

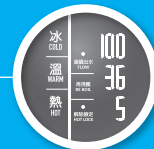


W360 x D520 x H1500 (mm)



SMART LED DISPLAY

- LED touch screen panel displays all three water temperatures in a sleek, minimalist layout.



EASY ACCESS

- Touch screen lets users access all functions and water temperatures easily.
- Drip tray height of 27.5cm means any water container can be used with ease.
- Large drip tray relieves your hands when filling water.



SAFETY IS PRIORITY

- Hot water lock prevents scalding accidents.
- Food-grade heat resistant pipes along with 304 stainless steel tap for superior safety.



FILTER REPLACEMENT NOTIFICATION

- Filter change notification can be set for each stage of filter. Never worry about missing a filter change!



SAFETY CHECK DESIGN

- Capable of diagnosing and displaying errors
- Detects water shortage or leakage.
- Equipped with electricity leakage breaker and temperature fuse.
- Suspends operations when tanks are empty and in cases of compressor or temperature sensor errors.



304 Stainless Steel
Water Outlet



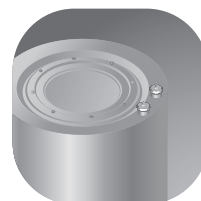
Tall Drip Tray Height
as 27.5 cm



Large Water Drip Tray



High Quality 316 Stainless
Steel Heating Pipe



304 Stainless Steel
for All Water Tanks



Durable Laminated
Color Metal Panels



『ACUO』 NEW PATENT FILTERS
QUICK-FIT
Easy & Convenient DIY Replacement



IN-BUILT FILTRATION SYSTEM

UF-591 5 Micron P.P. Filter

LIFESPAN : Approx. 3-6 months



P.P. Filters block out sediments and impurities such as sand, mud, rusts, etc...

UF-592 Block Activated Carbon Filter

LIFESPAN : Approx. 3-6 months



Activated Carbon Filter rids color and odor, absorbs chemical pollutions and heavy metals such as chloride, pesticides, lead, etc...

UF-22 R.O. Membrane Filter

LIFESPAN : Approx. 2 years



0.0001 micron R.O. membrane effectively filters out germs, toxics and heavy metals providing pure and safe drinking water.

UF-594 Granular Activated Carbon Filter

LIFESPAN : Approx. 12 months



Activated Carbon Filter rids color and odor, absorbs chemical pollutions and heavy metals such as chloride, pesticides, lead, etc...

* Lifespan varies depending on usage and quality of water source.

SPECIFICATIONS

Hot Water 90°C ± 10°C : Cold Water 15°C ± 10°C
Voltage can be customized based on requirement.

Model	Type	Voltage	Hot Power Consumption	Cold Power Consumption	Hot Tank	Cold Tank	Warm Tank	Hot Water Capacity	Cold Water Capacity
UO-8103AW	Cold / Warm / Hot	110V / 220V	1000W / 2000W	245W	10L	5L	20L	22L/hr(110V) 45L/hr(220V)	19L/hr

INNOTRIO CO., LTD. Tel: +886-2-2291-9000 Email: service@9000.com.tw <https://acuowater.com>

Please refer to actual product samples for accurate proportions and colors. We reserve the right to change product specifications without prior notices. PL-1245-1 23/05